

LEICESTERSHIRE COUNTY COUNCIL
HIGHWAYS FORUM FOR HINCKLEY AND BOSWORTH

26th JANUARY 2017

CHAIRMANS UPDATE

HINCKLEY AREA PROJECT UPDATE

REPORT OF THE DIRECTOR OF ENVIRONMENT AND TRANSPORT

Purpose

1. Following an update on 27th September 2016 this report provides a further update on progress with the Hinckley Area Project.

Background

2. The Hinckley Area Project aims to support the local economy by tackling congestion and improving access to jobs and education. The project is divided into 3 geographical zones (see Appendix A), plus zone 4 (Town Centre and A47 corridor). Key dates are shown in the table below.

Proposals

3. The proposals include pedestrian and cycling infrastructure, traffic calming, lorry weight restrictions, junction capacity/congestion and parking and traffic management improvements. To complement these infrastructure proposals 'softer' measures are also being implemented, such as education and training.

	Phase 1 – 2014/15 (zone 1)	Phase 2 – 2015/16 (zone 2)	Phase 3 – 2016/17 (zone 3)	Phase 4 – 2017/18 (zone 4)
Consultation	06.03.14 to 27.03.14	03.07.14 to 08.08.14	04.12.14 to 16.01.15	To be confirmed
Cabinet decision (approval of works)	17.06.14	19.11.14	16.03.15	To be confirmed
Works start (subject to Cabinet approval)	14.07.14 <i>(Enabling works started week commencing 23.06.14)</i>	01.04.15	01.04.16 <i>(Cabinet approval received 16.03.15)</i>	To be confirmed <i>(Delivery anticipated over 3 years)</i>
Anticipated works completion	28.11.14	End November 2015	End March 2017	To be confirmed

Key: **Completed**

Funding

4. Zone 1 of the Hinckley Area Project was funded from LTP3 capital monies.
5. Zones 2 and 3 are mainly being funded from the Government's Single Local Growth Fund (SLGF).
6. Complementary 'softer' measures were funded from the Government's Local Sustainable Transport Fund (LSTF).

Update

Zone 1 (North-west Hinckley) - 2014/15

7. Zone 1 was completed in November 2014 and covers the Coventry Road area of Hinckley.

Zone 2 (South Hinckley / Burbage and Earl Shilton) - 2015/16

8. Works for Zone 2 started in April 2015 and were completed in November 2015, before the start of the Christmas trading period.
9. A package of complementary LSTF 'softer' measures was delivered in parallel to compliment infrastructure introduced in Zones 1 and 2.

Zone 3 (North-east Hinckley, Barwell and Earl Shilton) - 2016/17

10. SLGF funding was awarded in July 2014, with consultation finishing on 16th January 2015. Works started on Zone 3 in April 2016.
11. The majority of the works in Hinckley around Ashby Road, Leicester Road and Barwell Lane are now complete. Some minor works are still to be carried out between now and the end of the financial year, including;
 - a. Two crossing points with refuges on Ashby Road near the junction of Barwell Lane.
 - b. Horse and cycle access gates on Barwell Lane.
 - c. Proposed revisions to parking controls in the Trinity Lane and the Druid Street area.

New parking restrictions are already in place adjacent to the recently opened Hinckley Parks Primary School on Leicester Road/ Butt Lane. An advisory 20mph speed limit has also been introduced on Leicester Road. Officers are currently working closely with stakeholders to review the parking restrictions introduced at the school, with a view to extending restrictions along Leicester Road.

12. In Earl Shilton, the majority of works are also complete.
13. In Barwell, a one way system on Chapel Street and Queen Street was trialled last year and ended in February 2016. The trial proved popular and after careful

consideration the decision was taken to make the trial layout permanent. The associated works were carried out in the October half term. The two parking bays causing recent concern on High Street in the vicinity of the zebra crossing and Parish Council office are now programmed for removal.

Regent Street

14. Plans were developed to reopen Regent Street to two way traffic and introduce more parking spaces. Early engagement on the concept took place in July/August 2014 and formal consultation took place from 4th December 2014 to 16th January 2015 (the same time as the Zone 3 consultation).
15. Cabinet considered the outcome of this consultation on 16th March 2015 and approved the proposal. The proposals are jointly funded by the County Council, Hinckley and Bosworth Borough Council and the Hinckley Business Improvement District.
16. Works began on site on 4th April 2016 and the works are now substantially complete. The new arrangements are generally working well, with no reported personal injury accidents and no significant observed problems with the traffic signals at each end of Regent Street. Officers are proposing to fully remove the old existing bus lane markings at the Lancaster Road end of Regent Street.

Zone 4 (Town Centre) – 2017/18 onwards

17. The project consists of further measures to build on and complement Zones 1 to 3. It will focus on:
 - Addressing key current traffic problems in the town .
 - Off-setting future traffic impacts of planned housing, employment and retail growth (including Earl Shilton and Barwell SUEs); potentially accelerating the delivery of agreed S106 infrastructure.
 - Complementing town centre regeneration projects.
 - Improving access to key services (employment, education, health care and food shopping).
18. A detailed feasibility study has been undertaken and considered a range of potential transport measures in arriving at recommended outline transport strategy for the town.
19. A package of measures has been identified and was submitted to the Leicester and Leicestershire Enterprise Partnership (LLEP) in March 2016 and put forward for the Governments SLGF. This includes an initial package of priority measures:
 - Capacity improvements to four key junctions in the town (on the A47 at the junctions with the A447 and A5 and on the B590 Rugby Road at the junctions with Hawley Road and Brookside;

- Network management improvements and improved network signage;
 - Parking management improvements
 - Car park variable message signage;
 - Completion of walking and cycling links across Hinckley town centre; and
 - 20mph zones in streets off the main 'B' road network.
20. A decision on the success of this bid is currently subject to award of a final agreed settlement from Government following the 2016 Autumn Statement. At this point therefore further development and implementation of this package of measures is largely dependent on this final settlement.
21. In the event that the Zone 4 SLGF bid is unsuccessful, officers will consider the availability of existing SLGF funding following completion of Zone 3 and continue to work with officers at Hinckley and Bosworth Borough Council to seek opportunities to develop and implement measures identified in the Zone 4 package.

Further information

22. Further information on the Hinckley Area Project can be viewed at:
www.leics.gov.uk/hinckley_area_project

Recommendation

23. It is recommended that the contents of this report are noted.

Officer to contact

Ian Vears:

Head of Service, Highways & Transportation, Policy & Strategy

Tel: (0116) 305 7215

Email:

Ian.Vears@leics.gov.uk

Angie Dunn:

Project Manager (Zone 3)

Tel: (0116) 305 8136

Email:

Angie.Dunn@leics.gov.uk

Mark Palfreyman:

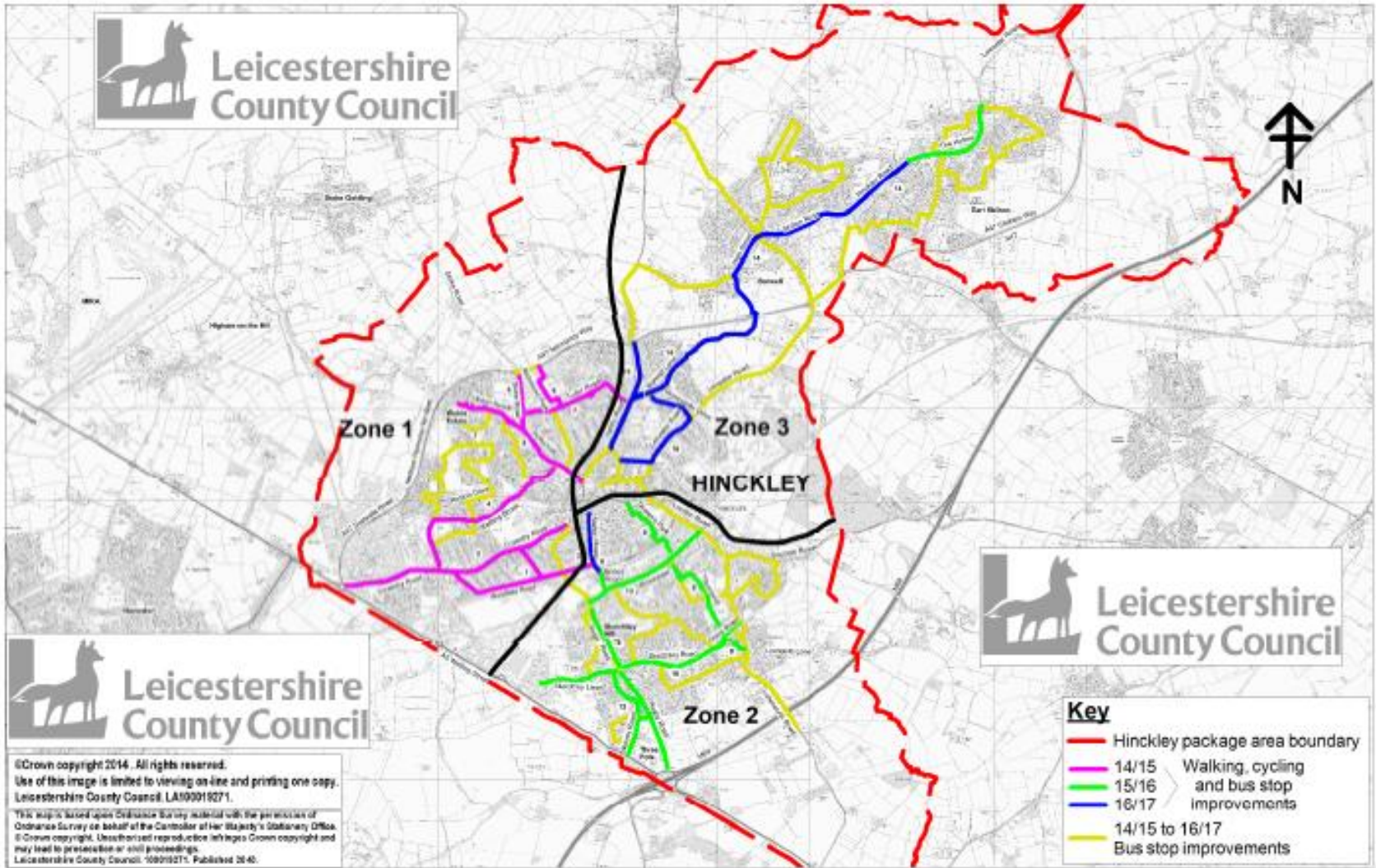
Project Manager (Zone 4)

Tel: (0116) 305 8109

Email:

Mark.Palfreyman@leics.gov.uk

The Hinckley Area Project boundary



**Hinckley Walking, Cycling & Bus Improvements Network
Zones and Links Plan**

This plan is indicative.

Version 2
Date: 17/06/14
Not to Scale

65

This page is intentionally left blank